

GOURMET LIQUID ANT BAIT

Honeydew¹ Formula

¹ Honeydew refers to the excretions of plant sucking insects that may be used as food by ants

No Mess

Use Indoors or Outdoors

No Sprays

Kills Roaches and Sweet & Protein Feeding Ants, except Fire & Harvester Ants

Controls Carpenter and Argentine Ants

Active Ingredient:

Disodium octaborate tetrahydrate1.0%

Other Ingredients:99.0%

Total **100.0%**

KEEP OUT OF REACH OF CHILDREN CAUTION

Net Contents: 1 gallon

Manufactured For:

Innovative Pest Control Products

8885 SW 7th Street

Boca Raton, FL 33433 USA

EPA Reg. No. 73766-2

EPA Est. No 81944-GA-001

PRECAUTIONARY STATEMENTS

Hazards to Humans and Domestic Animals

CAUTION

ENVIRONMENTAL HAZARDS

Do not apply directly to water. Do not contaminate water when disposing of equipment wash waters or rinsate.

The use of any pesticide in a manner that may kill or otherwise harm an endangered species or adversely modify their habitat is a violation of Federal law.

DIRECTIONS FOR USE

It is a violation of Federal law to use this product in a manner inconsistent with its labeling.

Do not contaminate food, feed or foodstuffs.

Place baits in areas inaccessible to children and pets.

To kill ants and roaches use indoors or outdoors near homes, apartments, condominiums, schools, hospitals, restaurants, grocery stores, food processing plants (nonfood areas), boats, cruise ships, institutional and commercial buildings, nursing homes, hotels and warehouses.

Gourmet Liquid Ant Bait may be used at full strength, diluted with distilled water or other water based, food grade liquid 1:1 to make bait containing 0.5% active ingredient. Bait may be used in Ant Cafe, Ant Café Outdoor, Snap Open Bait Station, Antopia® Bait Stations, KM AntPro Bait Stations or other similar stations that are sold separately.

Place the bait station on or near ant activity.

Place stations under food cabinets, sinks, stoves, refrigerators, food storage areas, attics, garages, basements, storage areas, closets. Place on exterior windowsills and in doorways to help prevent entry of ants. Some bait stations may be designed to be affixed to a wall, hung on pipes or branches, anchored in the ground or placed on a flat surface. When using bait stations, wash hands thoroughly before handling to remove any odors that may be repellent to ants, i.e. tobacco, garlic, and chemical cleaners.

OPEN PLACEMENT METHOD NOT TO BE USED IN CALIFORNIA

Gourmet Liquid Ant Bait can be used to make small, pea sized placements and or long thin lines in areas inaccessible to children and pets, where ants are a problem.

Outdoors: For best results place stations in shaded areas or create shade for the bait station. Avoid placing bait station where it will receive direct sunlight whenever possible.

For use around Structures- The number of bait Stations to use will vary with the type of ant and the size of the colony.

For initial placement- Place one bait station every fifty feet around the structure to be treated. If any of the bait stations is emptied in less than a week, double the initial placement. Replace baits as needed till feeding activity ceases.

Listed ants are attracted to and will feed on Gourmet liquid Ant Bait until they die. The bait is designed to work slowly and sufficient bait should be made available for at least 14 days of continuous feeding. Replace the bait with fresh bait as needed. Do not use sprays, foggers or any repellent chemicals or cleaners near the bait containers or placements. This may contaminate the bait and disrupt ant foraging causing the insects to cease feeding.

STORAGE AND DISPOSAL

Do not contaminate water, food, or feed by storage or disposal of this product.

Pesticide Storage: Store product in original container in a cool dry place out of reach of children. Do not allow product to freeze.

Pesticide Disposal and Container Handling: Nonrefillable container. Do not reuse or refill this container. If empty: Place in trash or offer for recycling if available. If partly filled: Call your local solid waste agency for disposal instructions. Never place unused product down any indoor or outdoor drain.

ACCEPTED
FOR REGISTRATION

Nov 30, 2010

New York State Department
of Environmental Conservation
Division of Solid & Hazardous Materials
Pesticide Product Registration

CEBO LÍQUIDO PARA HORMIGAS

Fórmula de melaza²

- Mata las cucarachas & las hormigas que se alimentan de sustancias dulces y proteínas, con excepción de las hormigas de fuego y, recolectoras
- Controla a las hormigas carpinteras y, argentinas

AVISOS DE PRECAUCIÓN

Riesgos para el ser humano y los animales domésticos

PRECAUCIÓN

RIESGOS MEDIOAMBIENTALES

No aplique directamente en el agua. No contamine el agua al desechar el agua de lavado o enjuague de los equipos. El uso de cualquier pesticida de una forma que pudiera matar o perjudicar de alguna otra manera a una especie amenazada, o perjudicar su hábitat, constituye una infracción a la ley federal.

INSTRUCCIONES DE USO

El uso de este producto en una forma diferente a la especificada en su etiqueta constituye una infracción a la ley federal.

- No contamine alimentos, forraje ni productos alimenticios.
- Coloque los cebos en áreas a las que niños y mascotas no puedan acceder.
- Para controlar hormigas y cucarachas, úselo en interiores y exteriores alrededor de viviendas, apartamentos, condominios, escuelas, hospitales, restaurantes, tiendas de comestibles, plantas procesadoras de alimentos (en áreas donde no haya alimentos), embarcaciones, cruceros, edificios institucionales y comerciales, casas de enfermería especializada, hoteles y depósitos.
- El cebo Gourmet Liquid Ant Bait puede usarse en su concentración completa, diluido con agua destilada u otro líquido apto para uso alimentario a razón de 1:1 para lograr un cebo que contenga un 0.5% de principio activo. El cebo se puede utilizar en las estaciones de cebo Ant Café, Ant Café Outdoor, Snap Open Bait Station, ANTOPIA®, KM AntPro® u otras estaciones similares que se venden por separado.
- Coloque la estación de cebo donde haya o cerca de donde haya actividad de hormigas. Coloque estaciones de cebo debajo de alacenas de alimentos, fregaderos, estufas, refrigeradores, áreas de almacenamiento de alimentos, áticos, garajes, sótanos, áreas de almacenamiento y armarios. Colóquelos en el alféizar de ventanas y en las puertas para evitar el ingreso de las hormigas. Algunas estaciones de cebo pueden estar diseñadas para acoplarse a una pared, colgarse de tubos o ramas, anclarse al suelo o colocarse sobre una superficie plana. Lávese bien las manos antes de manipular las estaciones de cebo para eliminar cualquier olor que pueda repeler a las hormigas, por ejemplo, tabaco, ajo, productos químicos o limpiadores.

NO UTILIZAR EL MÉTODO DE COLOCACIÓN ABIERTA EN CALIFORNIA
El cebo líquido Gourmet Liquid Ant Bait puede utilizarse para realizar colocaciones pequeñas, del tamaño de un guisante, y/o líneas largas y delgadas en lugares donde las hormigas constituyan un problema, y a los cuales los niños y mascotas no tengan acceso.
Exteriores: Para obtener mejores resultados, coloque las estaciones en áreas con sombra, o cree sombra para la estación de cebo. Siempre que sea posible, evite colocar la estación de cebo en lugares donde reciba la luz solar de forma directa.
Para uso alrededor de estructuras: El número de estaciones de cebo a utilizar varía según el tipo de hormiga y el tamaño de la colonia.

Para la colocación inicial: Coloque una estación de cebo cada cincuenta pies alrededor de la estructura a tratar. Si alguna de las estaciones de cebo se vacía en menos de una semana, duplique la colocación inicial. Reemplace los cebos según sea necesario hasta que cese la alimentación de los insectos.
El cebo Gourmet Liquid Ant Bait atrae a las especies de hormigas mencionadas, que lo comerán hasta morir. El cebo está diseñado para una acción lenta, y debe añadirse suficiente cantidad de cebo para lograr al menos 14 días de alimentación continua. Repita la colocación del cebo según sea necesario.

No use rociadores, atomizadores, productos químicos repelentes o limpiadores cerca de los envases de cebo o de los sitios de colocación. Si lo hiciera, podría contaminar el cebo y hacer que los insectos dejaran de comer.

ALMACENAMIENTO Y ELIMINACIÓN

- No contamine el agua, alimentos o forraje por el almacenamiento o eliminación de este producto.
- Almacenamiento del pesticida:** Guarde el producto en su envase original en un lugar fresco y seco, fuera del alcance de los niños. No deje que el producto se congele.
- Eliminación del pesticida y manipulación del envase:** Envase no rellenable. No vuelva a usar ni rellene este envase. Si está vacío: Arrójelo a la basura u ofrézcalo para reciclado, si estuviera disponible. Si tiene algo de contenido: Llame al organismo de control de residuos sólidos de su localidad para obtener instrucciones sobre la eliminación. Nunca vierta el producto sin usar en desagües de interiores ni de exteriores.

PRINCIPIO ACTIVO:

Tetrahidrato octaborato disódico1.00%
Otros Ingredientes:99.00%
TOTAL 100.00%

² Melaza hace referencia a las secreciones de los insectos que succionan las plantas y que las hormigas pueden utilizar como alimento

MANTENGA FUERA DEL ALCANCE DE LOS NIÑOS

PRECAUCIÓN

Contenido neto:
1 cuarto de galón (32 onzas líquidas)

EPA Reg. No./Nro. 73766-2
EPA Est. No./Nro. 81944-GA-001



Use Indoors or Outdoors Para uso en interiores o exteriores

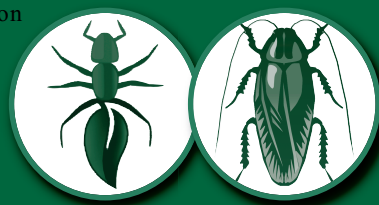
ACCEPTED FOR REGISTRATION

Nov 30, 2010

New York State Department of Environmental Conservation
Division of Solid & Hazardous Materials
Pesticide Product Registration

GOURMET LIQUID ANT BAIT®

CEBO LÍQUIDO PARA HORMIGAS



NO MESS NO SPRAYS

Sin complicaciones Sin necesidad de aerosoles

HONEYDEW¹ FORMULA

Fórmula de melaza²

- Kills Roaches and Sweet & Protein Feeding Ants, Except Fire & Harvester Ants
- Controls Carpenter and Argentine Ants

Active Ingredient:

Disodium octaborate tetrahydrate1.00%
Other Ingredients:99.00%
TOTAL 100.00%

¹Honeydew refers to the excretions of plant sucking insects that may be used as food by ants.

KEEP OUT OF REACH OF CHILDREN CAUTION

Net Contents: 32 fluid oz.

Lot#/Lote núm.



MANUFACTURED FOR/FABRICADO POR:
Innovative Pest Control Products

8885 SW 7th Street
Booa Raton, Florida 33433 USA

GOURMET LIQUID ANT BAIT®

Honeydew¹ Formula

PRECAUTIONARY STATEMENTS

Hazards to Humans and Domestic Animals

CAUTION

ENVIRONMENTAL HAZARDS

Do not apply directly to water. Do not contaminate water when disposing of equipment wash waters or rinsate. The use of any pesticide in a manner that may kill or otherwise harm an endangered species or adversely modify their habitat is a violation of Federal law.

DIRECTIONS FOR USE

It is a violation of Federal law to use this product in a manner inconsistent with its labeling.

- Do not contaminate food, feed or foodstuffs.
- Place baits in areas inaccessible to children and pets.
- To kill ants and roaches use indoors or outdoors near homes, apartments, condominiums, schools, hospitals, restaurants, grocery stores, food processing plants (nonfood areas), boats, cruise ships, institutional and commercial buildings, nursing homes, hotels and warehouses.

Gourmet Liquid Ant Bait® may be used at full strength, diluted with distilled water, or other water-based, food grade liquid 1:1 to make bait containing 0.5% active ingredient. Bait may be used in Ant Cafe, Ant Café Outdoor, Snap Open Bait station, ANTOPIA® Bait Stations, KM AntPro® Bait Stations or other similar stations that are sold separately.

Place the bait station on or near ant activity. Place stations under food cabinets, sinks, stoves, refrigerators, food storage areas, attics, garages, basements, storage areas, closets. Place on exterior windowsills and in doorways to help prevent entry of ants. Some bait stations may be designed to be affixed to a wall, hung on pipes or branches, anchored in the ground or placed on a flat surface. When using bait stations, wash hands thoroughly before handling to remove any odors that may be repellent to ants, i.e. tobacco, garlic, and chemical cleaners.

OPEN PLACEMENT METHOD NOT TO BE USED IN CALIFORNIA

Gourmet Liquid Ant Bait can be used to make small, pea-sized placements and/or long thin lines in areas inaccessible to children and pets, where ants are a problem.

Outdoors: For best results place stations in shaded areas or create shade for the bait station. Avoid placing bait station where it will receive direct sunlight whenever possible.

For use around structures: The number of bait stations to use will vary with the type of ant and the size of the colony. **For initial placement:** Place one bait station every fifty feet around the structure to be treated. If any of the bait stations are emptied in less than a week, double the initial placement. Replace baits as needed until feeding activity ceases.

Listed ants are attracted to and will feed on Gourmet Liquid Ant Bait® until they die. The bait is designed to work slowly and sufficient bait should be made available for at least 14 days of continuous feeding. Replace the bait with fresh bait as needed.

Do not use sprays, foggers or any repellent chemicals or cleaners near the bait containers or placements. This may contaminate the bait and disrupt ant foraging causing the insects to cease feeding.

STORAGE AND DISPOSAL

Do not contaminate water, food or feed by storage or disposal of this product. **Pesticide Storage:** Store product in original container in a cool dry place out of reach of children. Do not allow product to freeze. **Pesticide Disposal and Container Handling:** Nonrefillable container. Do not reuse or refill this container. **If empty:** Place in trash or offer for recycling if available. **If partly filled:** Call your local solid waste agency for disposal instructions. Never place unused product down any indoor or outdoor drain.

ABRA AQUÍ

Instrucciones en español en el interior

